



Professional Services

Store Design & Equipment



About Us

50+ years grocery & food service experience

Award-winning designs

Leaders in innovative layouts & solutions

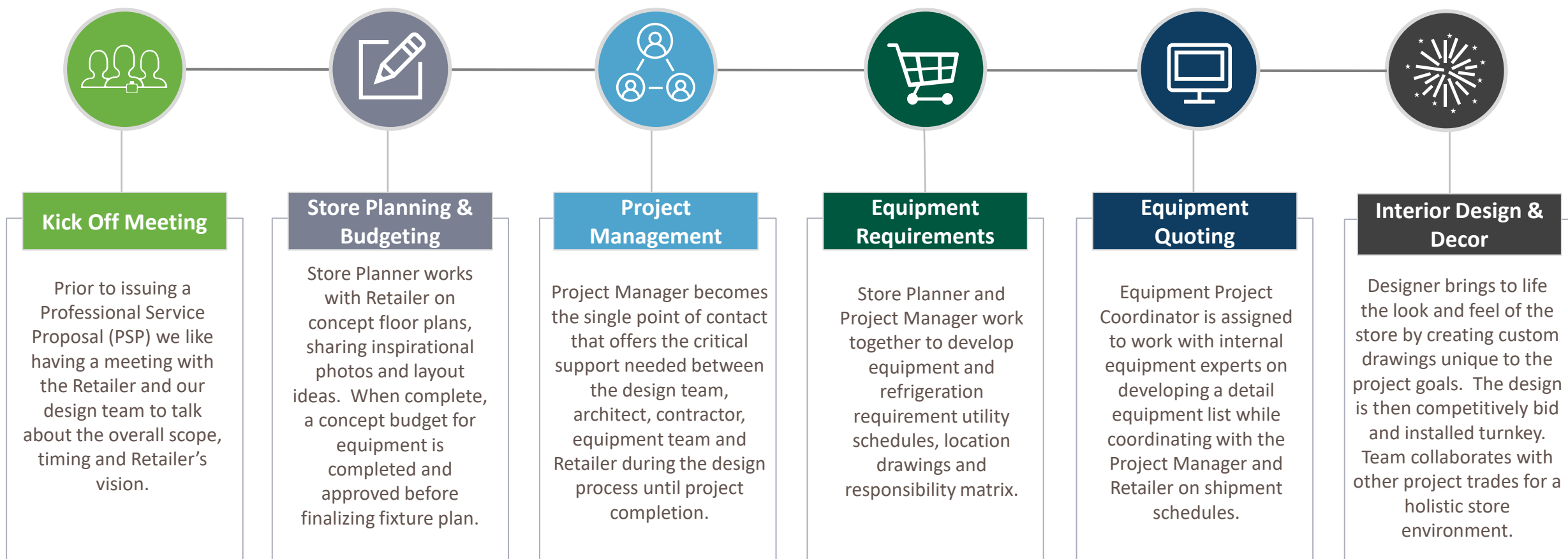
Equipment experts in cost savings & efficiencies

In-house team consists of:

- Store Planning
- Project Management
- Equipment Services
- Requirement Drawings
- Refrigeration Design
- Lighting Design
- Interior Design & Decor



Our Design Process



After final fixture plan is complete our UNFI Account Manager will take lead to introduce you to the UNFI Shelf Services team to review their services with Macro Store Planning, Assortment, Planograms, Retail Execution, and Market Intelligence. Click this link to learn more: [Home | Professional Services \(unfi.com\)](#)

Deliverables & Key Benefits

Store Planning

- Concept fixture planning
- Final fixture plan with exact equipment dimensions and tagged schedule
- Expertise in grocery layouts for all store formats
- Creative merchandising concepts and industry trends
- Experienced planners with library of completed plans and inspirational photos
- Collaboration with UNFI merchandising and shelf management teams

Project Management

- Concept equipment budget
- Equipment liaison between contractor, A&E, and Retailer
- Equipment delivery coordination with GC
- On site project coordination
- Experts in grocery store design and construction
- Provides project oversight to avoid costly mistakes

Requirement Drawings

- Equipment schedule for utilities
- Electrical location plan
- Data line location plan
- Plumbing and drain location plan
- Clearly defines project scope for contractors which saves time
- Avoids costly mistakes due to lack of details
- Retailer able to utilize local contractors and engineers that don't have previous experience with grocery store projects

Refrigeration Design

- Custom refrigeration design (not brand specific which limits quoting)
- Equipment schedules
- Circuit, trenching, lighting, fan, defrost, anti-sweat plans
- Refrigeration rack legend
- Leverage industry expertise on proven design and results
- Consult with an expert on proven environmentally friendly systems and refrigerants

Equipment

- Customer Support team 1-800-835-0165 (equipmentservices@unfi.com) to assist with misc quote needs
- Equipment Specialists that are experts in assigned categories
- Consolidated itemized equipment list with cutsheets for projects
- Obtain lower national account pricing by utilizing UNFI's scale
- Vendor accountability through long-standing partnerships

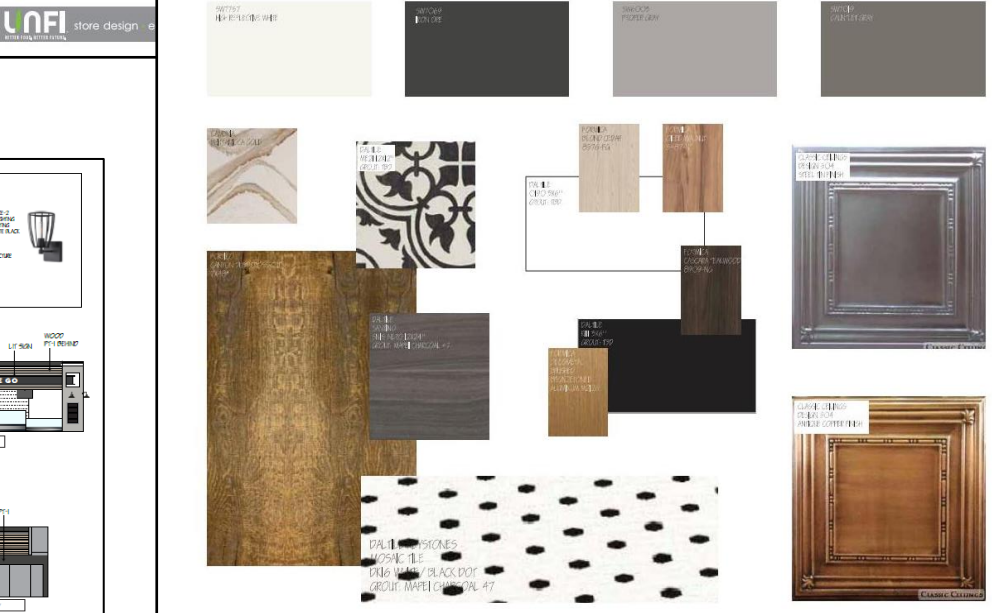
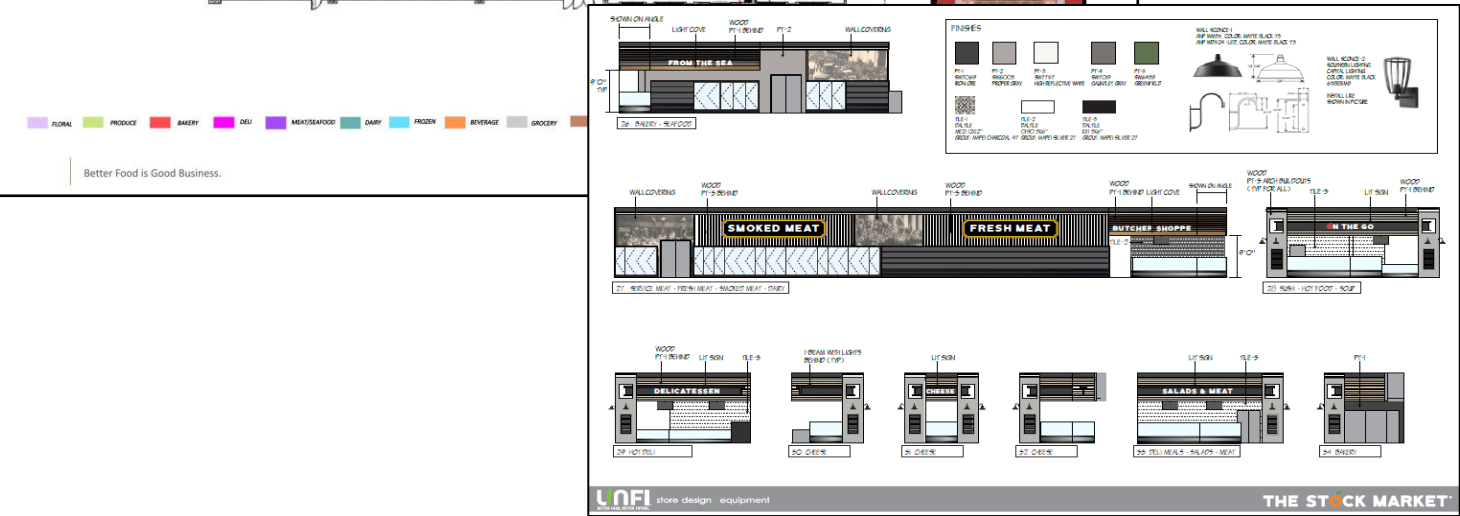
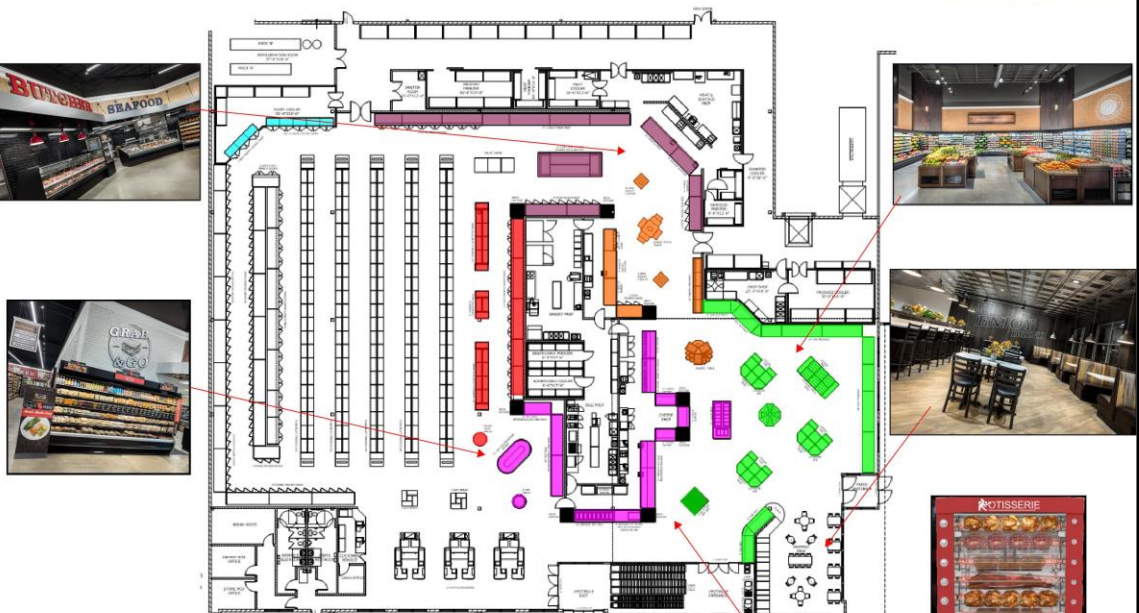
Interior Design

- Interior elevations & finishes
- Lighting concept plans & fixture details
- Floor finish & environmental specifications
- Turnkey custom décor manufacturing & installation oversight
- Creative experts that design to all budgets & grocery store formats
- Deliver savings by competitively bidding décor packages
- Award winning designs focused on timeless environmental

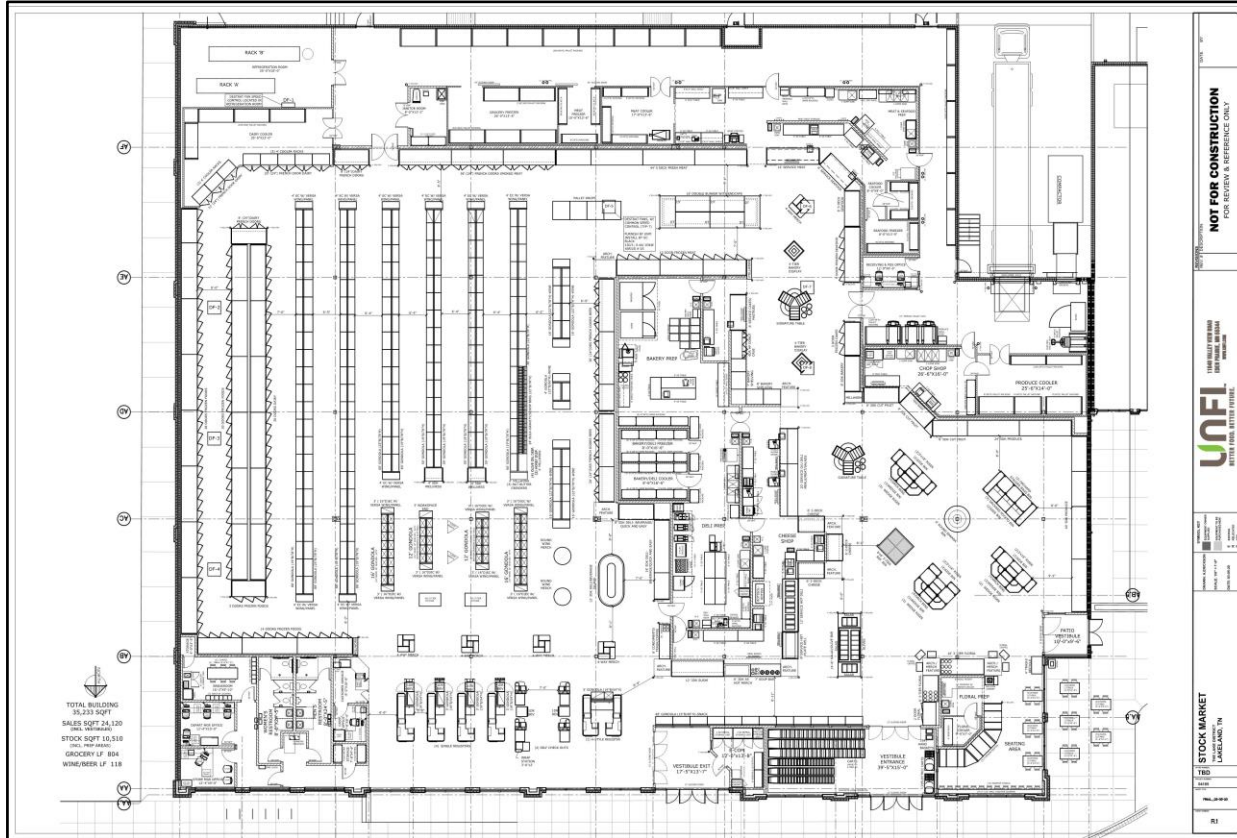
Recent Project Deliverables

THE STOCK MARKET

LAKELAND, TN



Recent Project Deliverables



UNFI
BETTER FOOD. BETTER FUTURE.

EquipVPro

Printed: 10/4/2017

SERVICE DELI

#	Quote # Plan #	SVC #/Link	Vendor Part #	Description (special comment bold italic print)	Units	Price	Ext. Price	Vendor Name /Link	P.O.#	Date Ordered	Requested Date	Confirmed Ship Date	Item Received	Invoice Paid
904	199947	E0032766	C-24	BOKSTER HEATER, ELECTRIC, 6 GALLON STORAGE CAPACITY, ELECTRIC OPERATION, 24-IN W, STAINLESS STEEL FRONT, CASTONE TANK, NSF, cUL, UL, 208V/60HZ/1PH, 66.7 AMP/5 -HATCO <i>REvised PRICING PER A.L.I.T. RQ/CHEST, 2007/60°C/FH</i>	1	\$2,035.50	\$2,035.50	HATCO CORPORATION	^ 519319	9/9/17	9/29/17	ON-TIME	Yes	
905	199947	E0033325	S3-1616-DISH-W	SINK, PREP, 3-COMP., 16"x26" W/ INSINCERATOR DISPOSER ATTACHED, INCL. PRE RINCE FAUCET W/ (1) ADD-ON 10" SWING FAUCET (WSP116A2DDBS32DSHS-SVKT) - WDNHOLT	1	\$4,723.00	\$4,723.00	WDNHOLT SVT ITEM#SHT CORP	^ 519320	9/9/17	9/29/17	LATE 10/9/2017		
906	199947	E0033558	S1-2424-24JR-W	SINK, PREP, S/S, 1-COMPARTMENT, 24"x24"x17D, 24" DEATHBOARD - LEFT & RIGHT, INCL. PRE-RINSE ENCORE FAUCET WITH 14" SWING ENCORE FAUCET (WS1124242D24-SVKT) - WDNHOLT	1									

SLICERS

SUBTOTAL \$4,027.00

907	199947	E0009496	GSR-HD	SLICER, SRM-AUTOMATIC, OSP SERIES, 13" CARBIDE BLADE, WITH LIFTING DEVICE PRO SERIES, 29L X 25D X 26H, ALUMINUM CONSTRUCTION, 740W, 6.6A, 120-V 1-BE220BA	1	\$1,	
908	199947	E0028313	CUB-VALU1-PK-E-A	CUB VALU1-PAK A - INCLUDES-SZ3-RMB-SLINGSHOT MOTOR, RETRACTABLE WHEEL, SLICER MOUNTING SYSTEM WITH HOOR MOUNTING / MECHANICAL LIFT ASSISTANCE SZ-22-BAD & TISSUE / GLOVE BOX HOLDER CC-58T - COILED CORD - DELL BUDDY - MAKE NEW.	1	\$1,	

TABLE - STAINLESS STEEL TOP

SUBTOTAL \$1,012.30

909	199947	E0028193	TSFE-304S-W	TABLE, PREP, S/S, 30"x48", FULLY-ENCLOSED, W/ SLIDING DOORS, S/S BOTTOM SHELF, 16 GA. TOP (STCT-20848R304S) - WDNHOLT	1	\$1,	
910	199947	E0033491	TSFE-3024-W	TABLE, PREP, S/S, 30"x24", FULLY-ENCLOSED, W/ SLIDING DOORS, 16" BOKED BACKPLASH, 16 GA. TOP (STCT-20824R3024) - WDNHOLT	1	\$1,	

SERVICE DELI DEPARTMENT TOTAL.....

GRAND TOTAL.....

https://www.svh... svharbor.c

Safety is our top-priority ...
... GSP HD series – automatic safety slicer ...

Slicer is the first manufacturer to achieve the world-class standard!

NEW!

- Stronger design - stronger at 100% weight than ever previous models
- Wider contact surface for improved capacity
- Overload protected electronic construction
- Fine and coarse feeds, lower prices, legs fold
- Improved feeding system (motor and blade)
- Larger and heavier construction
- Sturdy steel industry
- Choose design choice for the cabinet and base, increased product yield
- Operation is faster than the manual and fully enclosed type, "on-to-go" will avoid any confusion
- The new generation of the Best Choice GSP series are designed to reduce noise, vibration and lower speed cost of operation
- Safe feature - Stop if the blades become blocked
- Blade fixed and can't come back out
- Interlocked and Auto Shutter from control switch
- Larger handle placed for maximum comfort
- Slide door access during cleaning process
- Removal of waste - eliminate any fire hazard setup and hygiene

Best Made in the Industry

The entire design of our table sets are clean and easy to clean. The stainless steel is a long lasting material. The four methods to protect the table from corrosion. Our

Note: The "Confirmed Ship Date" field indicates which items have been confirmed that shipment will be "ON-TIME" or "LATE" per the requested date.

Page 110 of 110

Top National Account Vendors

HUBERT®**HOBART**

WEITRON

HUSSMANN®**Peggs®****TECHNIBILT®**
A **wanzl** Company THERMOSEAL**AMIGA®****winholt**
equipment.**AcuityBrands.****siffron™**Carlson
AirFlo®
Merchandising SystemsSupermarket
PARTS
WAREHOUSE
WE SUPPORT YOU**Hillphoenix®**A **DOVER™** COMPANY**KILLION**
INDUSTRIES, INC.

Precision Wire Products, Inc.

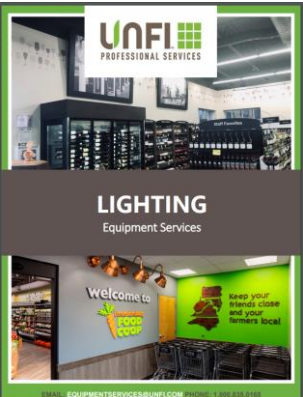
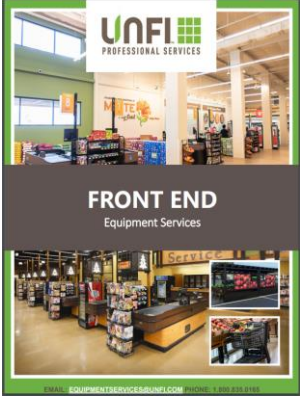
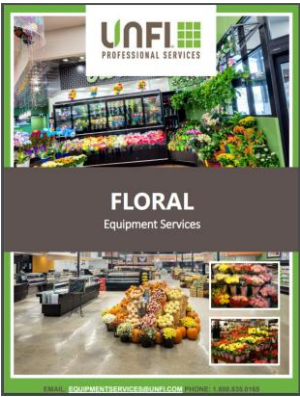
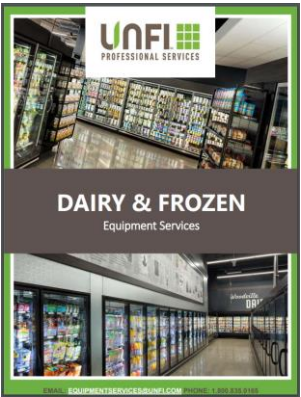
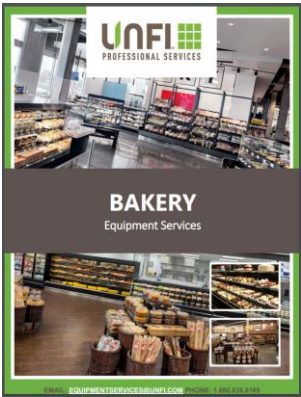
 Chase Doors
— A SENNECA COMPANY —**rtc** SOUTHERN
CaseArts **McCue** **portico**
SYSTEMS **JSI** STORE
FIXTURES **KYSOR WARREN** **Structural**
Concepts

amerlux

 **TENNANT****ASF**
Store Fixtures**ALTO SHAAM** **Trade**
Fixtures
Retail Merchandising**true®****madix**
INNOVATION ON DISPLAY**CROWN** **versacart**FULL SPECTRUM RETAIL SOLUTIONS
 **MARCO** **AK**
Material Handling Systems**mart cart¹** **BIRO**
RELIABLE FOOD PROCESSING EQUIPMENT
SINCE 1921**AHT** **Anthony®****börger****METTLER TOLEDO** **ZERO ZONE****kps**
GLOBAL®



Equipment Catalogs sample of items...



Click Catalog To View Content

Mackenthun's, Minnetrista MN



Cub, Rochester MN



Sullivan's Marketplace, Gluckstadt MS



Village Beach Market, Vero Beach FL



Fredericksburg Food Coop, Fredericksburg VA



Hugo's Pure Market, Grand Forks ND



The Market @ 25th, Richmond VA



Corner Market, Hattiesburg MS



Palubicki's, Fosston MN





UNFI Equipment Services should absolutely be a part of any retailer's remodel or new store efforts. Many of the buying programs they have negotiated with major equipment suppliers are second to none. The team they have assembled is as good as the equipment they provide. They are always there to troubleshoot any issues long after the sale is complete. - Mike Jutz - Jerry's Enterprises Inc.

What Our Customers Say

We wanted to thank this team for the amazing work on this project and all the help along the way. Building a store amid all this craziness in the world... not easy! But we did it! Very thankful, very appreciative. Our partnership with UNFI is long, and meaningful. - Eli Goldsmith - Healthy Living Market - Williston, VT

I wanted this to be the best store in Mississippi and I believe we accomplished that goal. The response has been incredible, and sales have been awesome. - David Roberts - Corner Market

This pertains to daily-use equipment including shelving, baskets, hand baskets, deli case lights, LED store lights, LED parking lot lights, meat department machinery, bailers, equipment parts and much more. I've included Gina, our contact at UNFI, in this communication. My interactions with them over the past years have been consistently outstanding. I wanted to make sure everyone with a store is aware of their availability and the excellent service and value they provide. They are life savers! - Chad McDonald - Sweet Home Thriftway15

UNFI was very easy to work with. I was able to contact them whenever for the support I needed. During a remodel project, UNFI was able to provide what we needed at a fair price, with support to help us from planning to installation. It was a great experience! - Sherry Meyers, Just Food Co-op - Northfield, MN

I love the fact we had all these years of experience supporting us in this project with these amazing fresh modern ideas with ways to incorporate the history of our community. - Kristen Ravourdin - The Market @ 25th



Contact Information and Marketing Videos

Equipment Services Support

1-800-835-0165

equipmentservices@unfi.com

Customer Testimonials

<https://vimeopro.com/user48556009/store-design-services>

Our Design Process

<https://vimeopro.com/user48556009/store-design-and-equipment>

Décor Made Easy

<https://vimeopro.com/user48556009/decor-made-easy/video/432933863>

Thank You.